

Lincoln Memorial University
Medical Laboratory Science Program
Program Outcomes Spring 2018 – Spring 2024

**American Society for Clinical Pathology (ASCP) Board of Certification
(BOC) Exam Results**

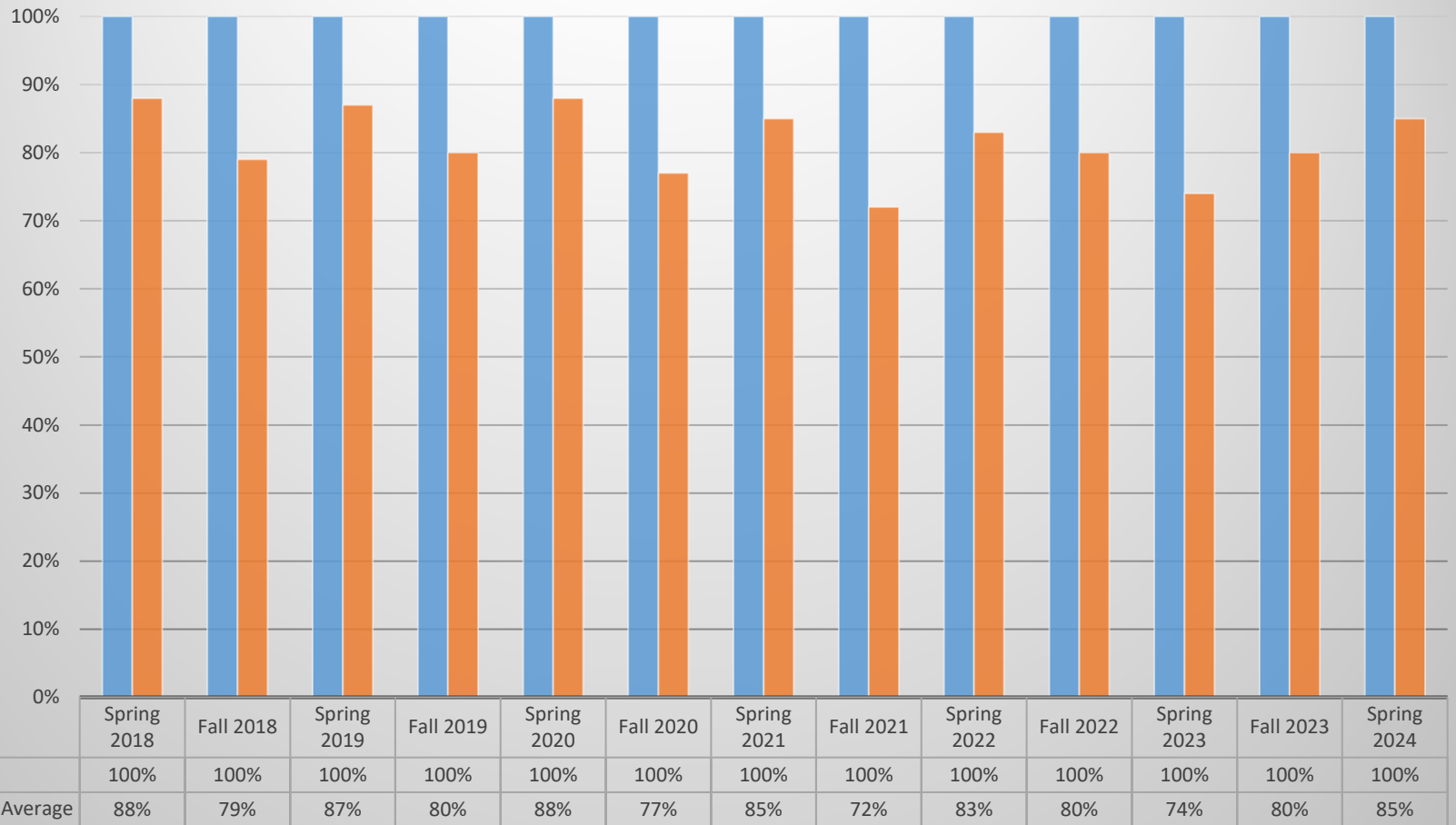
Employment Rates of the LMU MLS Graduates

Graduation / Attrition Rates

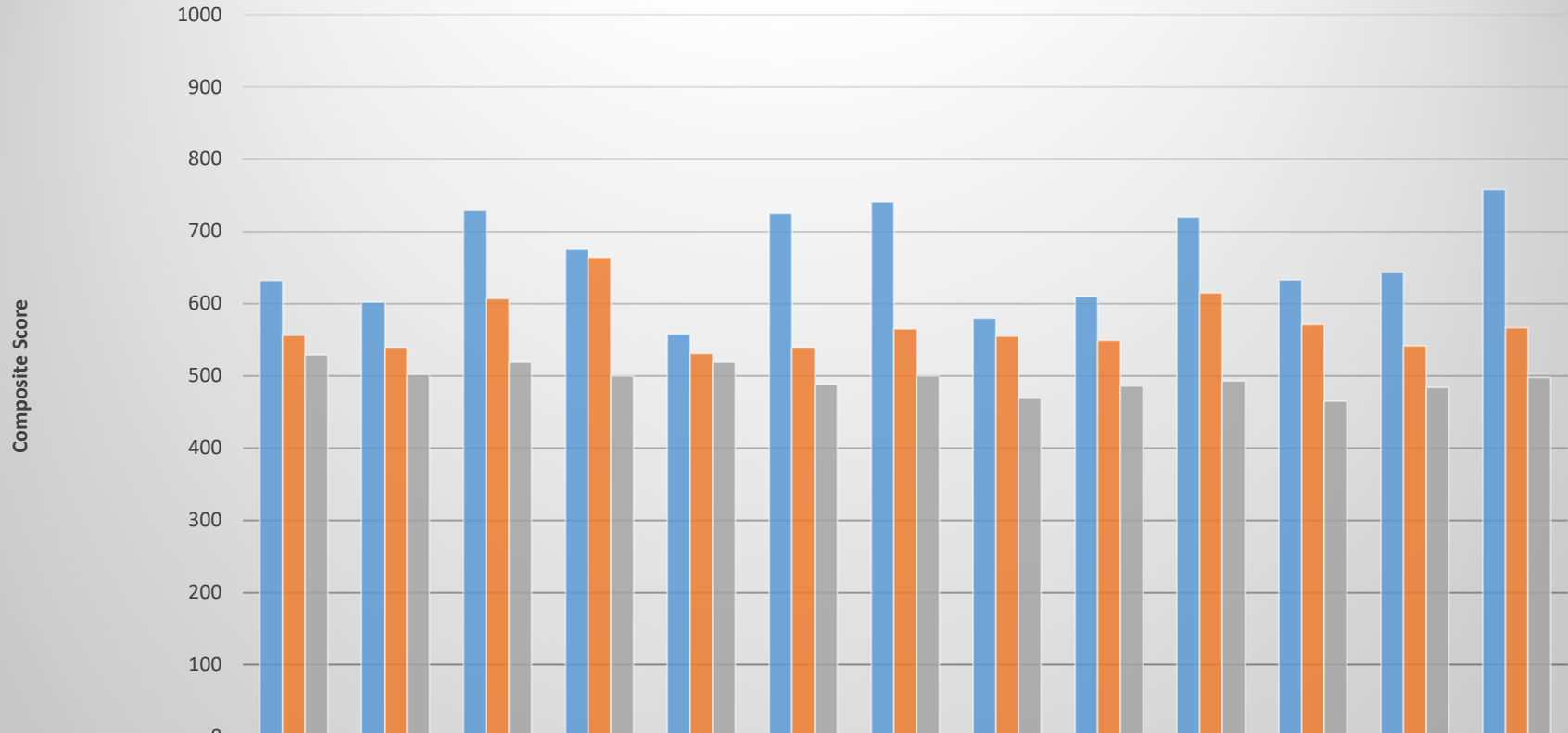
Program Outcome Summary Table

Outcome Measures	2018	2019	2020	2021	2022	2023	2024
ASCP BOC Exam Certification Rates	100%	100%	100%	100%	100%	100%	100%
Graduation Rates	100%	100%	89%	100%	91%	100%	100%
Attrition Rates	0%	0%	11%	0%	9%	0%	0%
Employment Placement Rates Of LMU MLS Graduates	100%	100%	100%	100%	100%	100%	100%

ASCP Board of Certification 1st Attempt Class Pass Rates

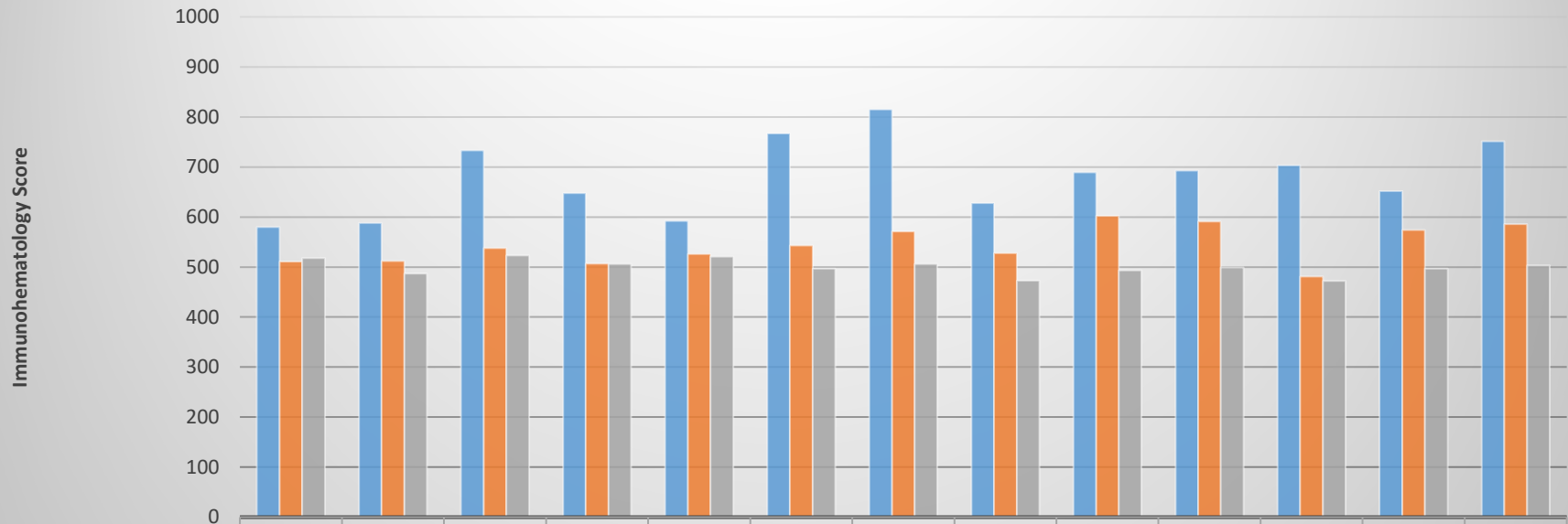


ASCP Board of Certification Composite Scores



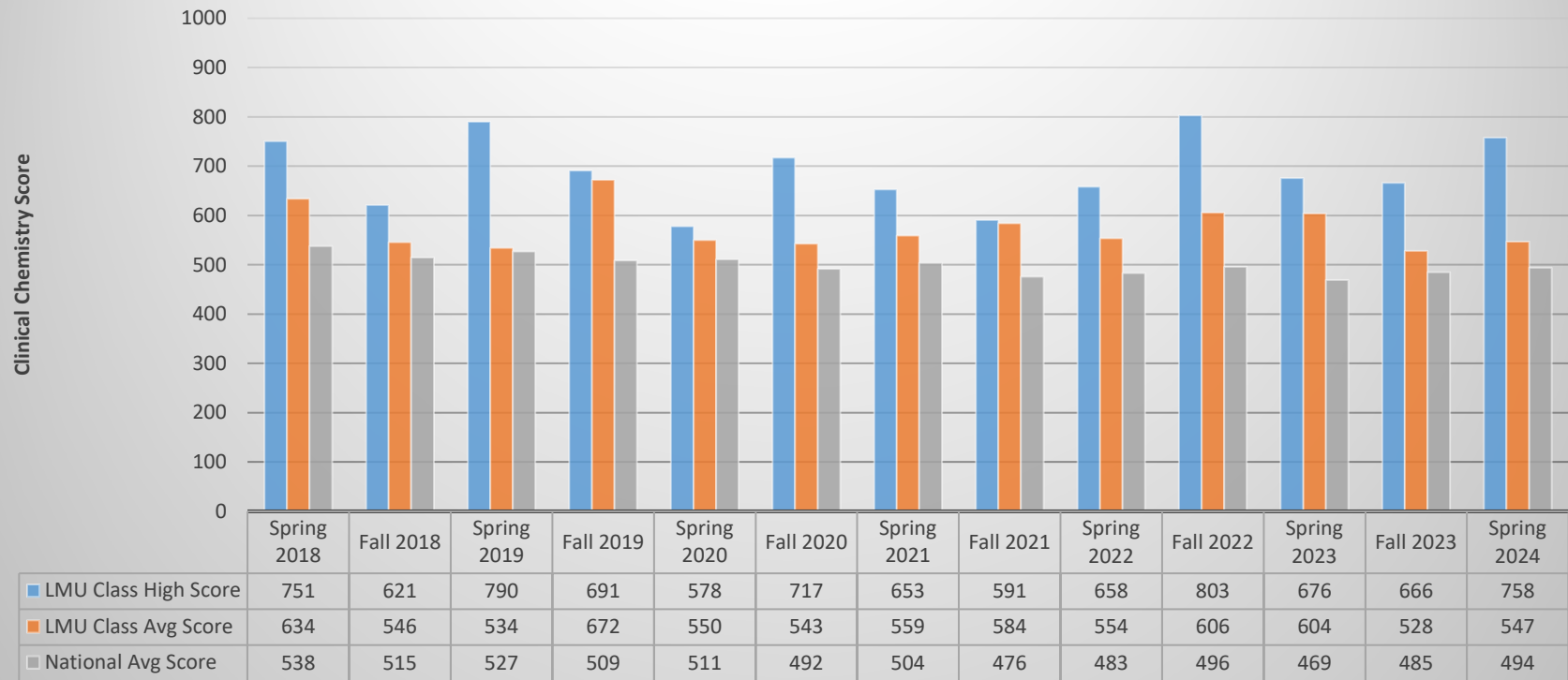
	Spring 2018	Fall 2018	Spring 2019	Fall 2019	Spring 2020	Fall 2020	Spring 2021	Fall 2021	Spring 2022	Fall 2022	Spring 2023	Fall 2023	Spring 2024
LMU Class High Score	632	602	729	675	558	725	741	580	610	720	633	643	758
LMU Class Avg Score	556	539	607	664	531	539	565	555	549	615	571	542	567
National Avg Score	529	502	519	500	519	488	500	469	486	493	465	484	498

ASCP Board of Certification: Exam Category I: Immunohematology

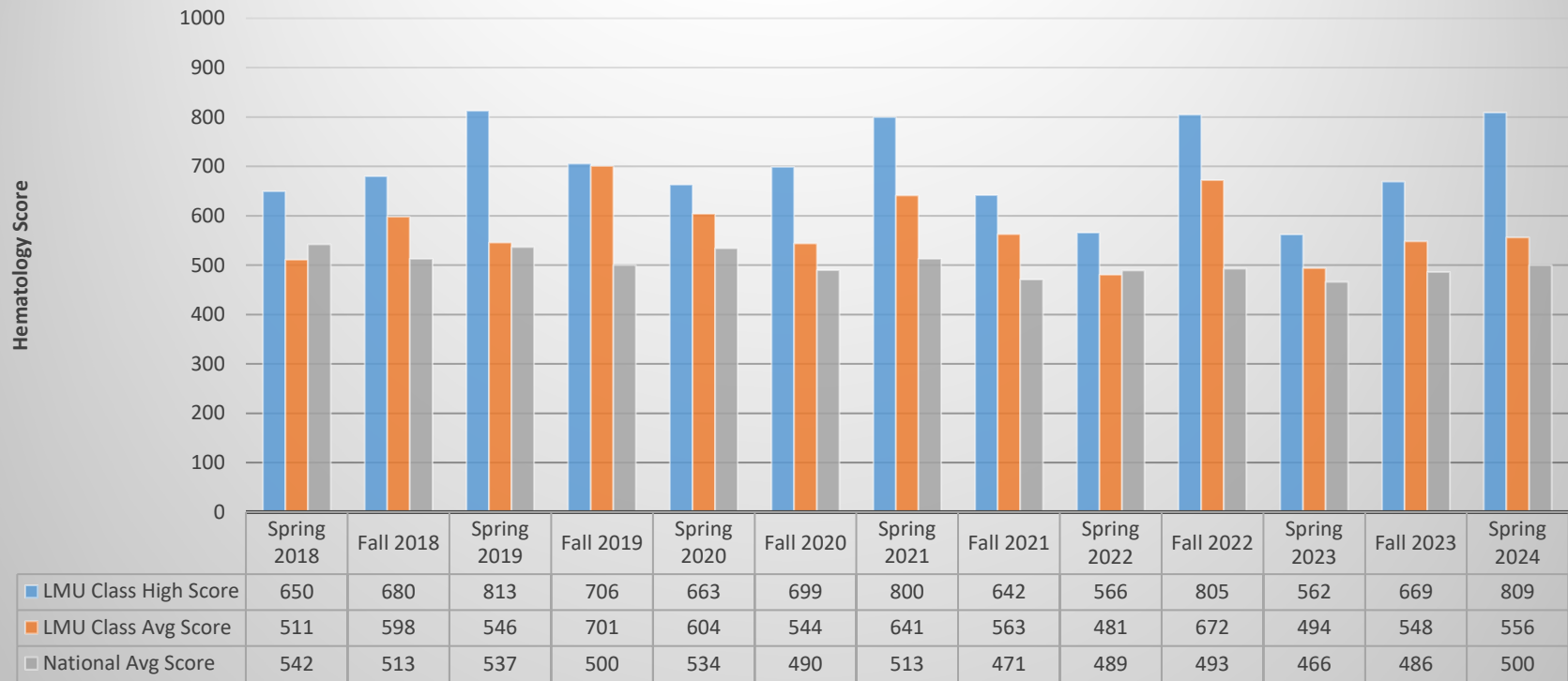


	Spring 2018	Fall 2018	Spring 2019	Fall 2019	Spring 2020	Fall 2020	Spring 2021	Fall 2021	Spring 2022	Fall 2022	Spring 2023	Fall 2023	Spring 2024
LMU Class High Score	580	588	733	648	592	767	815	628	689	693	703	652	751
LMU Class Avg Score	511	512	538	507	526	543	571	528	602	591	481	574	586
National Avg Score	518	487	523	506	521	497	506	473	493	499	472	497	503

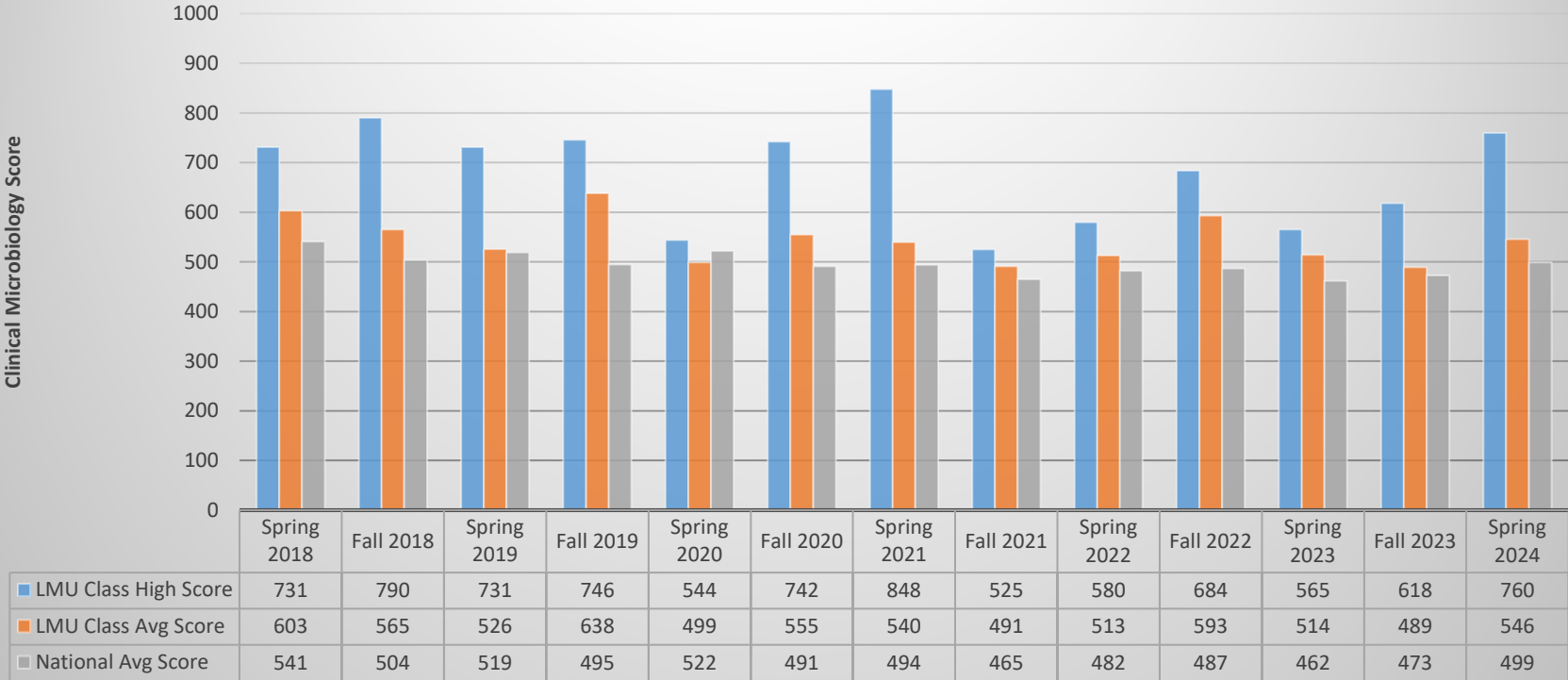
ASCP Board of Certification: Exam Category II: Clinical Chemistry



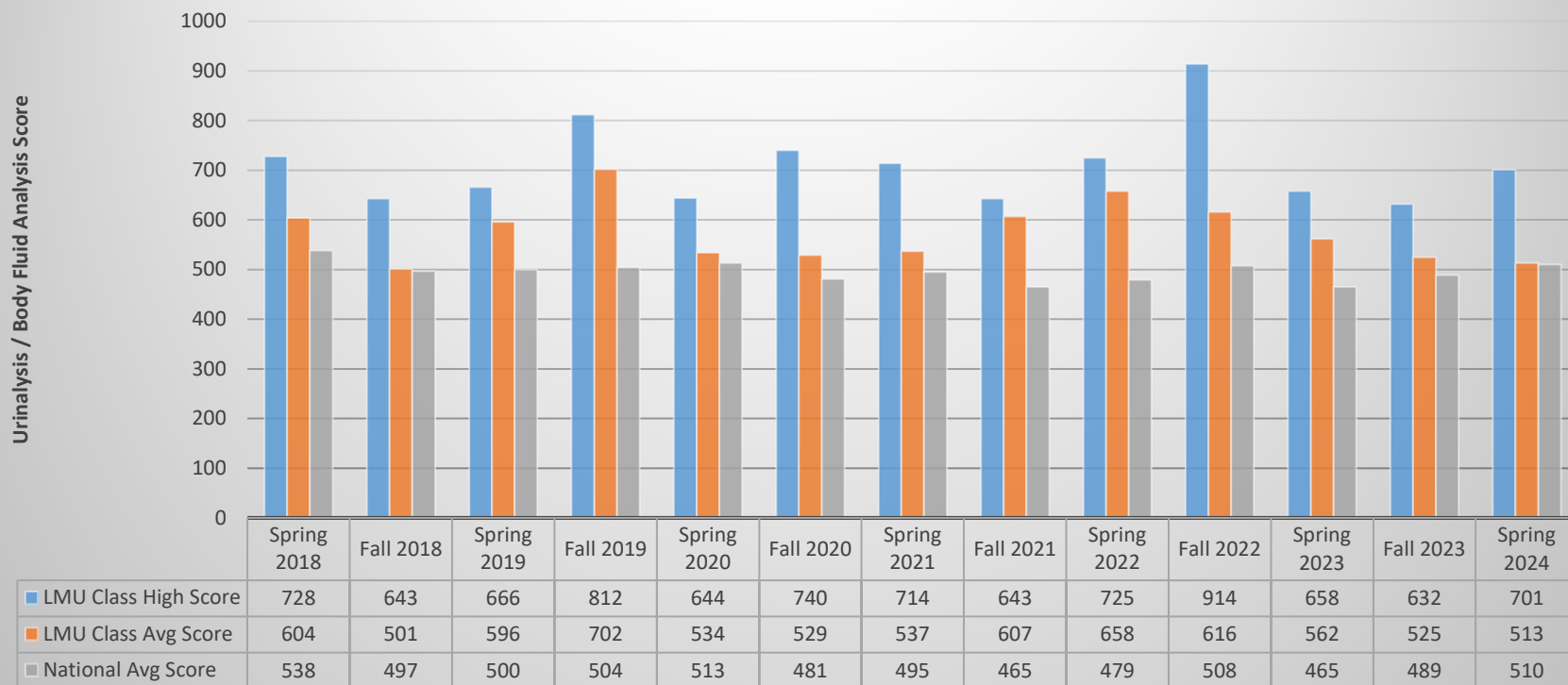
ASCP Board of Certification: Exam Category III: Hematology



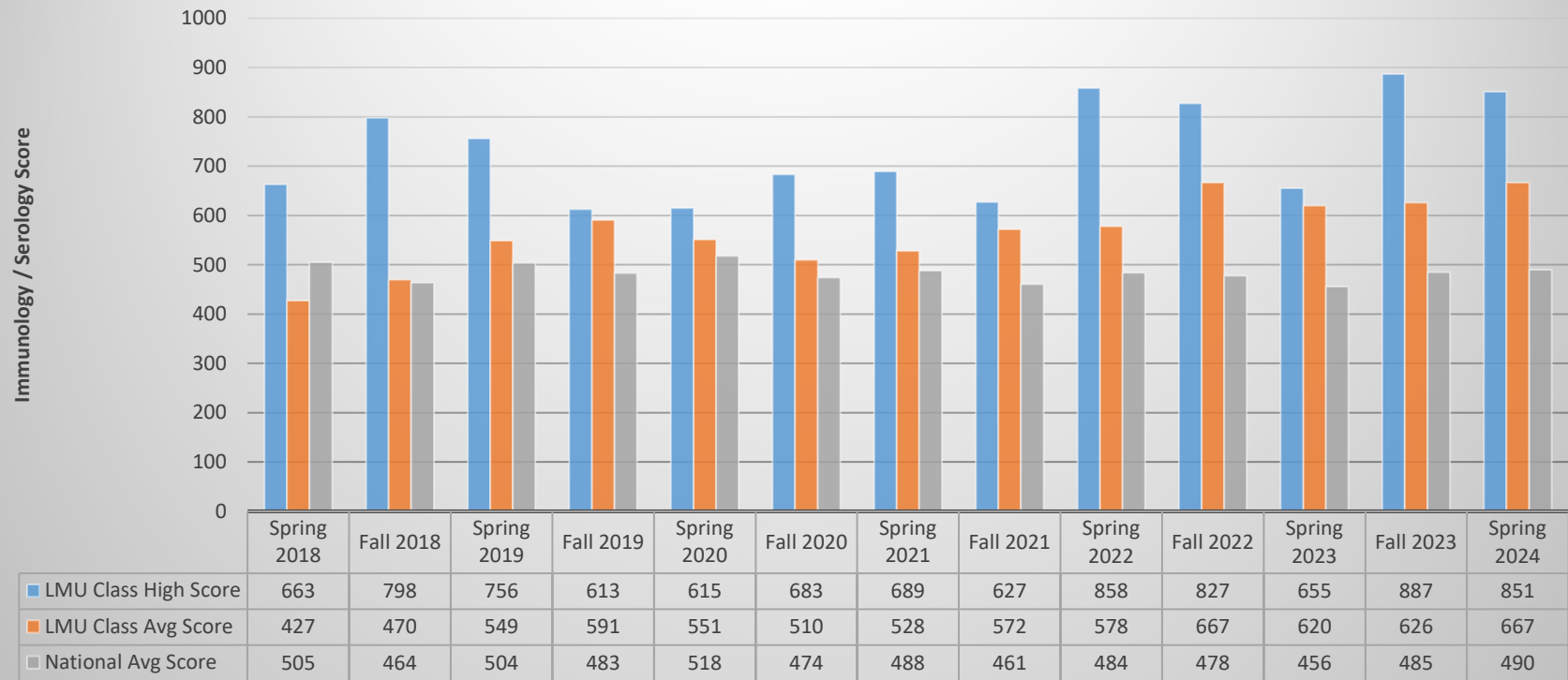
ASCP Board of Certification: Exam Category IV: Clinical Microbiology



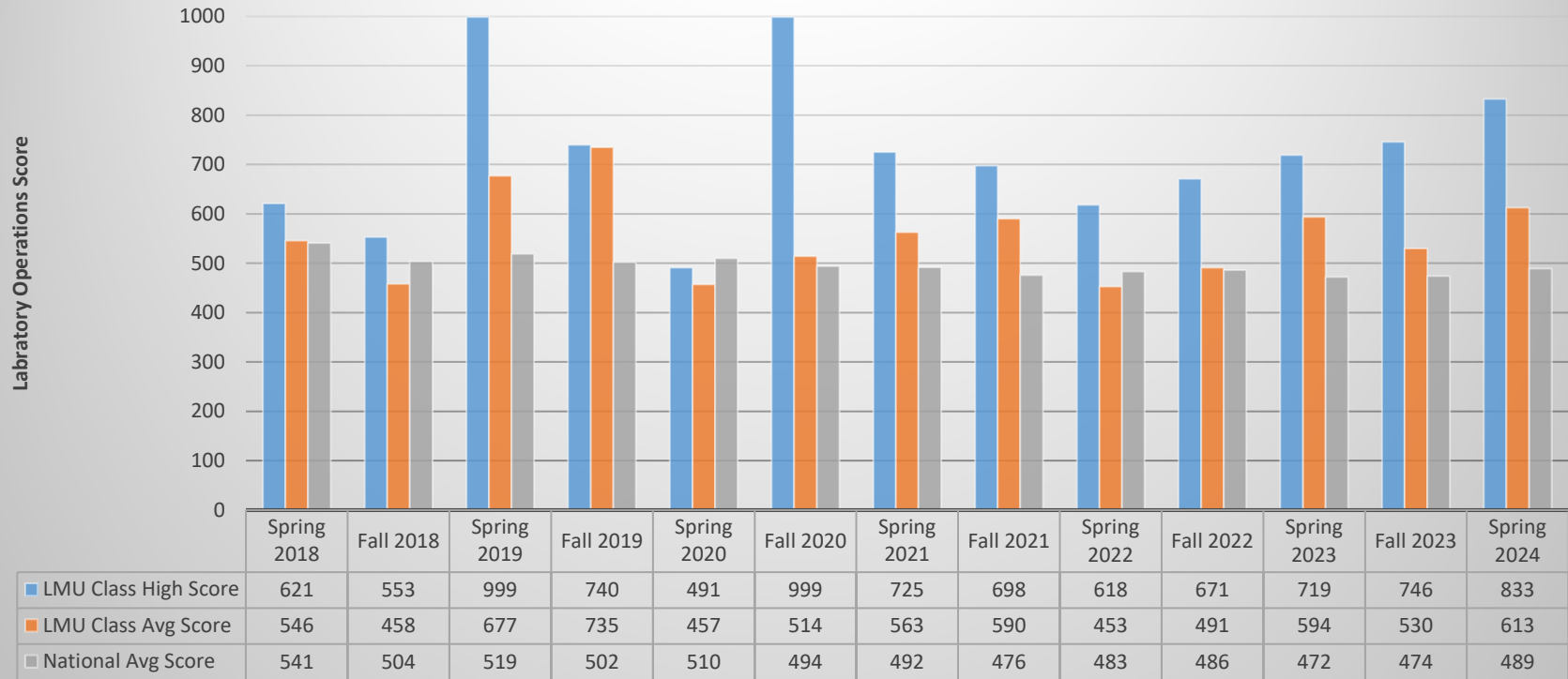
ASCP Board of Certification: Exam Category V: Urinalysis / Body Fluid Analysis



ASCP Board of Certification: Exam Category VI: Immunology / Serology



ASCP Board of Certification: Exam Category VII: Laboratory Operations



B. Employment Rates of LMU MLS Graduates

Lincoln Memorial University Medical Laboratory Science graduates are in high demand by employers. It is common for each LMU MLS graduate to receive multiple job offers in a variety of clinical settings such as hospitals, reference laboratories, clinics, physician's offices, etc. This fact is due to a combination of the quality of the LMU Medical Laboratory Science graduates and the extraordinary need for medical laboratory scientists in the clinical field.

This chart illustrates the fact that for many years, every graduate of the LMU MLS Program who sought gainful employment post-graduation in the medical laboratory science field was successful.

