

Lincoln Memorial University
Medical Laboratory Science Program
Program Outcomes Spring 2018 – Fall 2024

**American Society for Clinical Pathology (ASCP) Board of Certification
(BOC) Exam Results**

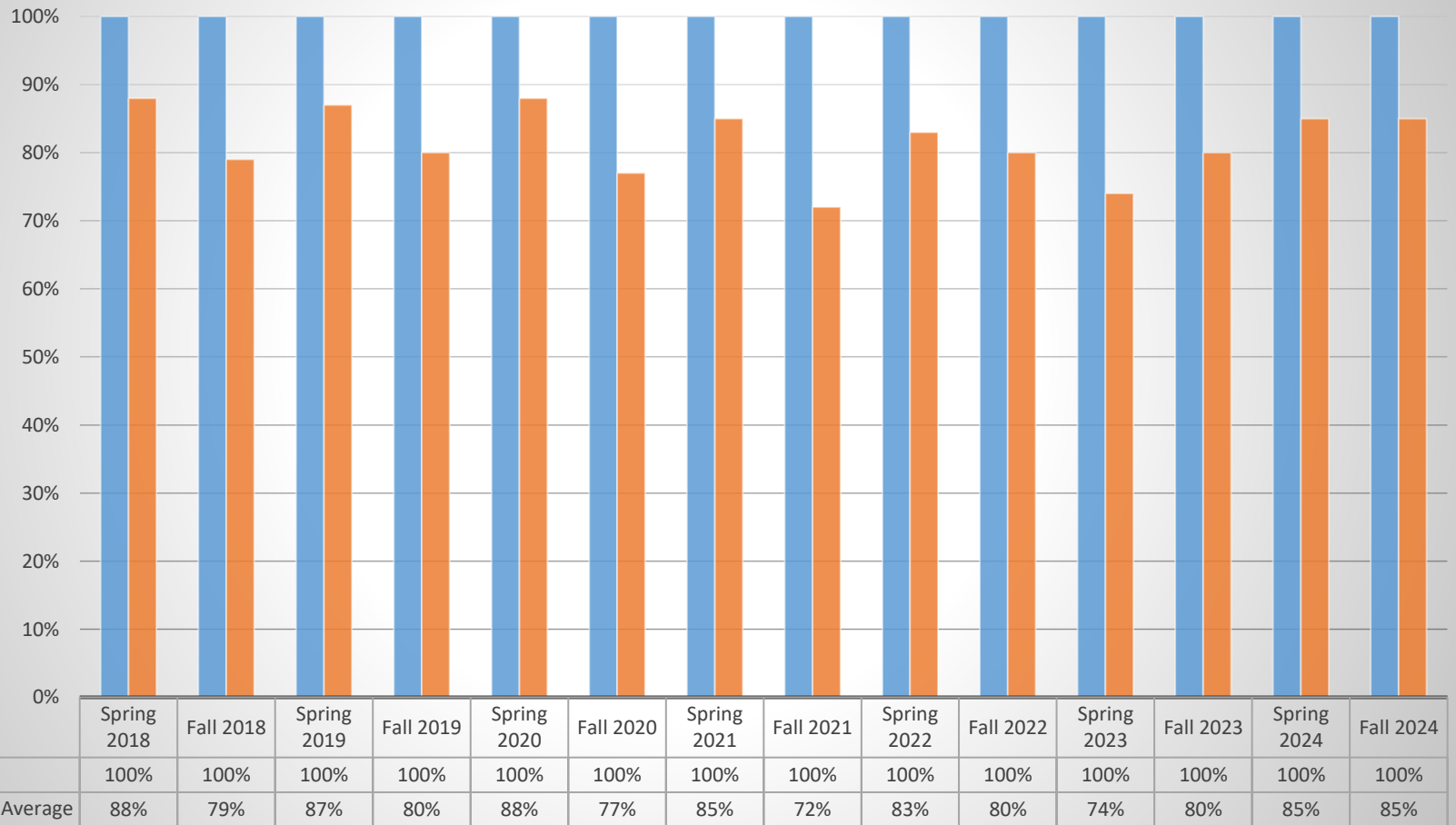
Employment Rates of the LMU MLS Graduates

Graduation / Attrition Rates

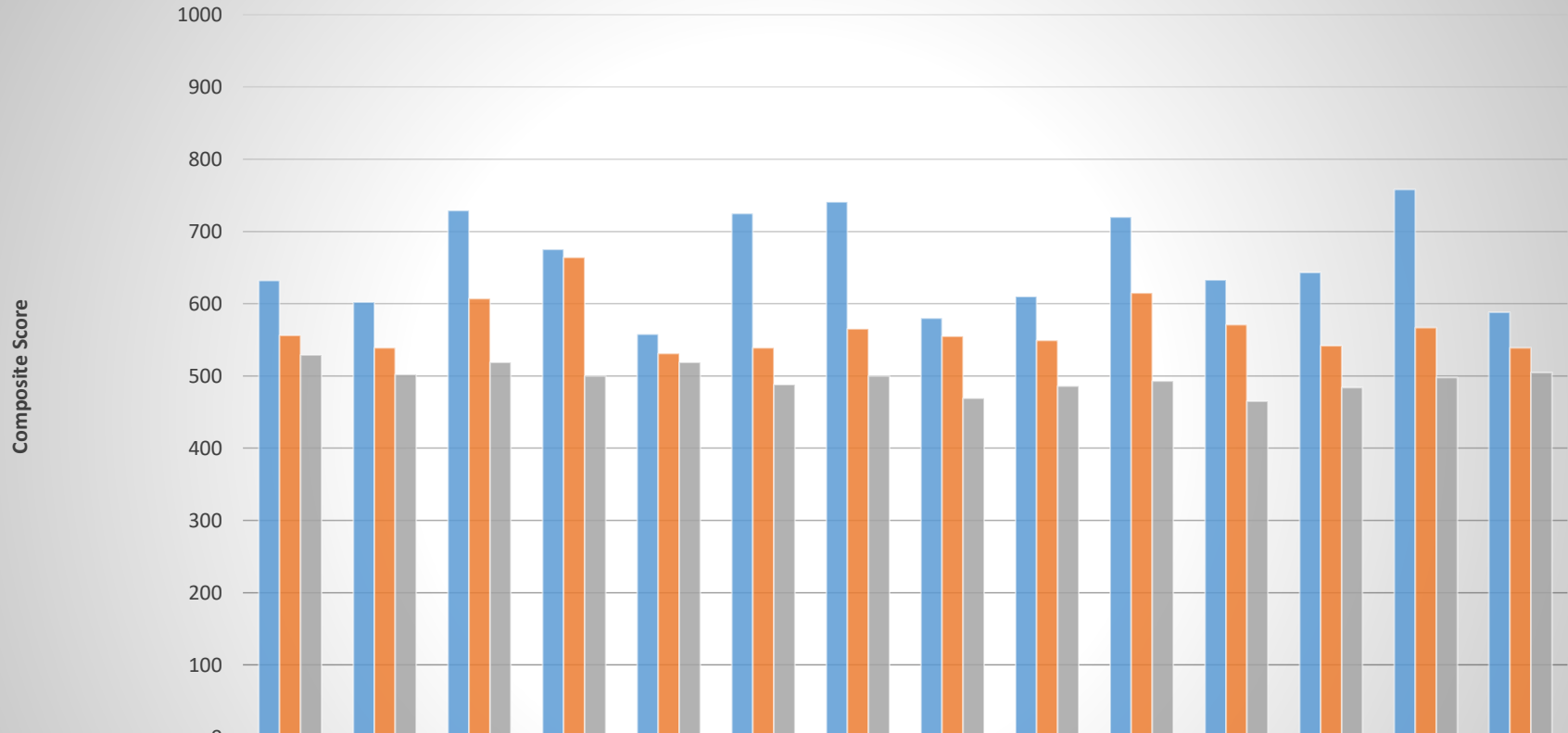
Program Outcome Summary Table

Outcome Measures	2018	2019	2020	2021	2022	2023	2024
ASCP BOC Exam Certification Rates	100%	100%	100%	100%	100%	100%	100%
Graduation Rates	100%	100%	89%	100%	91%	100%	100%
Attrition Rates	0%	0%	11%	0%	9%	0%	0%
Employment Placement Rates Of LMU MLS Graduates	100%	100%	100%	100%	100%	100%	100%

ASCP Board of Certification 1st Attempt Class Pass Rates

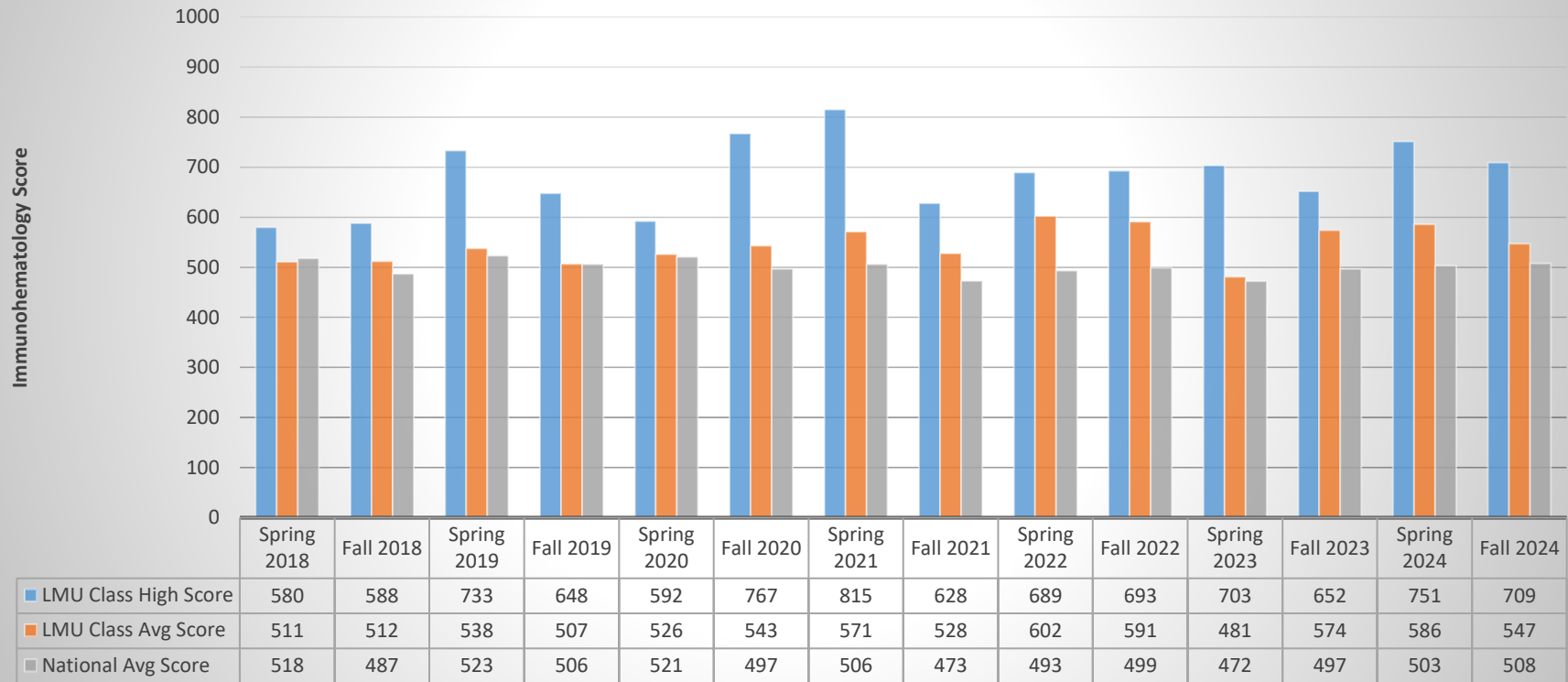


ASCP Board of Certification Composite Scores



	Spring 2018	Fall 2018	Spring 2019	Fall 2019	Spring 2020	Fall 2020	Spring 2021	Fall 2021	Spring 2022	Fall 2022	Spring 2023	Fall 2023	Spring 2024	Fall 2024
■ LMU Class High Score	632	602	729	675	558	725	741	580	610	720	633	643	758	588
■ LMU Class Avg Score	556	539	607	664	531	539	565	555	549	615	571	542	567	539
■ National Avg Score	529	502	519	500	519	488	500	469	486	493	465	484	498	505

ASCP Board of Certification: Exam Category I: Immunohematology



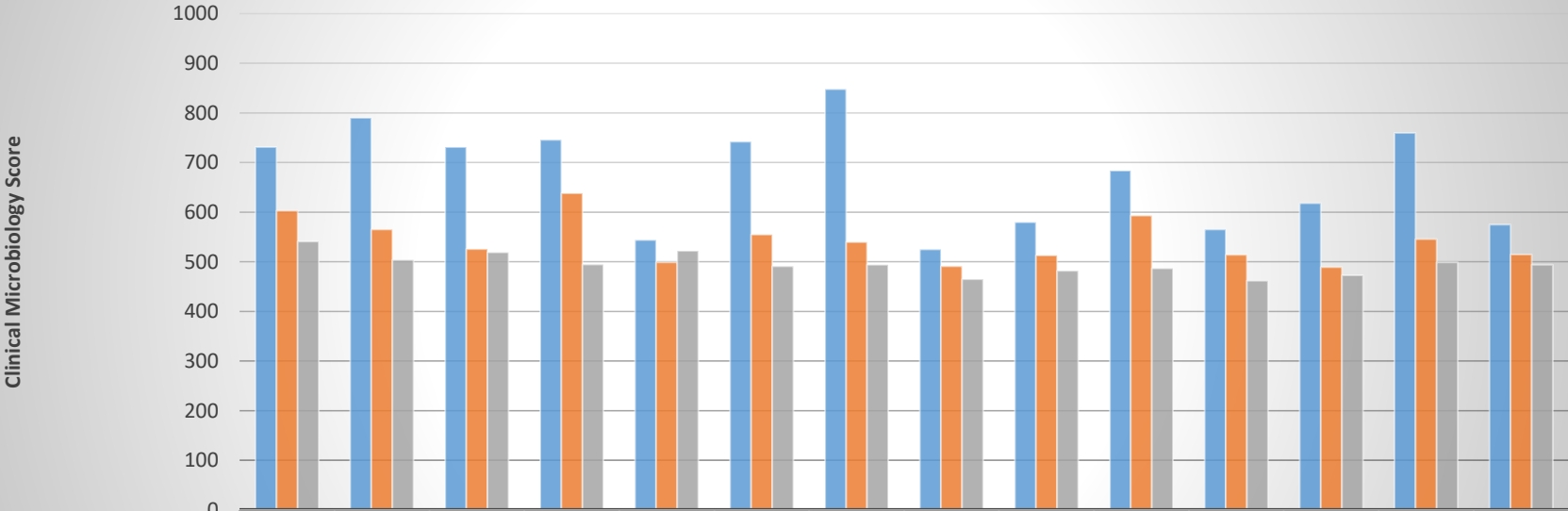
ASCP Board of Certification: Exam Category II: Clinical Chemistry



ASCP Board of Certification: Exam Category III: Hematology



ASCP Board of Certification: Exam Category IV: Clinical Microbiology



	Spring 2018	Fall 2018	Spring 2019	Fall 2019	Spring 2020	Fall 2020	Spring 2021	Fall 2021	Spring 2022	Fall 2022	Spring 2023	Fall 2023	Spring 2024	Fall 2024
■ LMU Class High Score	731	790	731	746	544	742	848	525	580	684	565	618	760	575
■ LMU Class Avg Score	603	565	526	638	499	555	540	491	513	593	514	489	546	515
■ National Avg Score	541	504	519	495	522	491	494	465	482	487	462	473	499	494

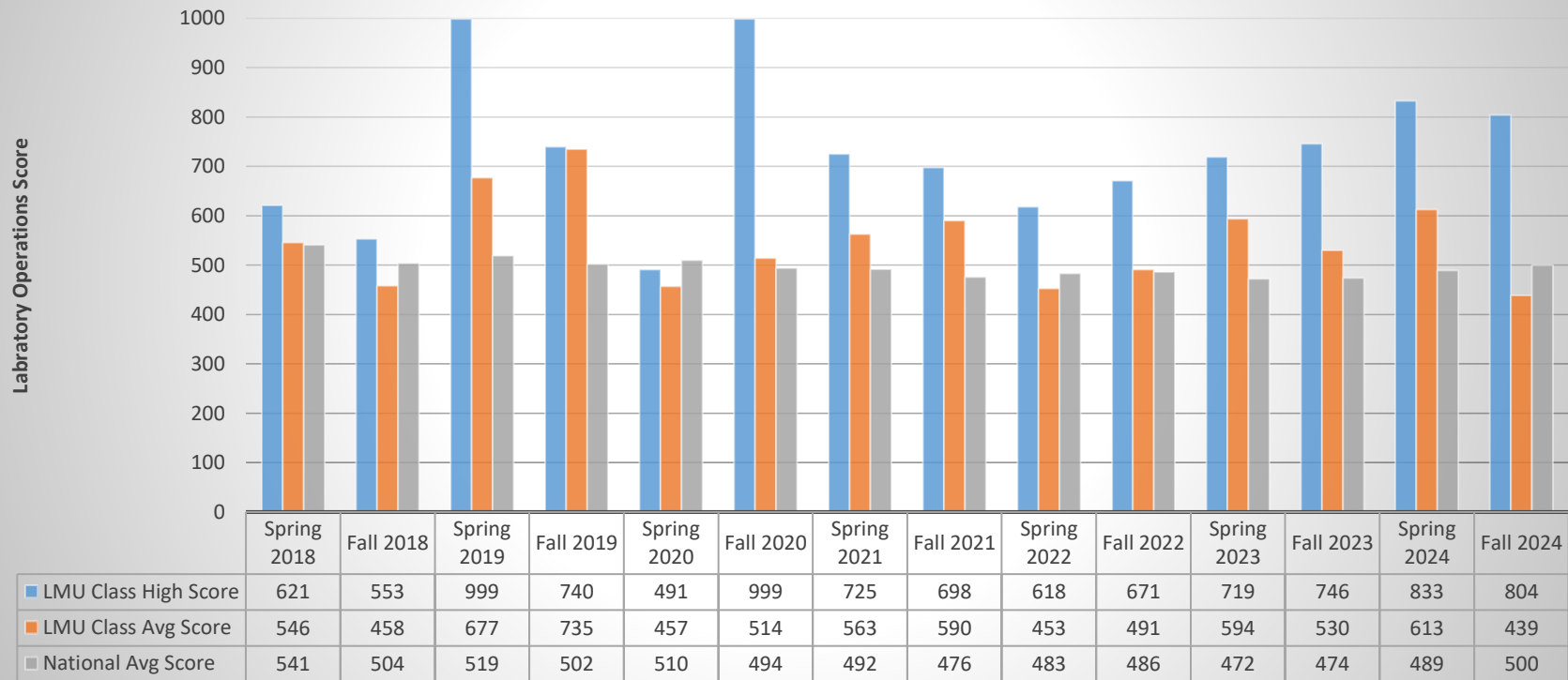
ASCP Board of Certification: Exam Category V: Urinalysis / Body Fluid Analysis



ASCP Board of Certification: Exam Category VI: Immunology / Serology



ASCP Board of Certification: Exam Category VII: Laboratory Operations



B. Employment Rates of LMU MLS Graduates

Lincoln Memorial University Medical Laboratory Science graduates are in high demand by employers. It is common for each LMU MLS graduate to receive multiple job offers in a variety of clinical settings such as hospitals, reference laboratories, clinics, physician’s offices, etc. This fact is due to a combination of the quality of the LMU Medical Laboratory Science graduates and the extraordinary need for medical laboratory scientists in the clinical field.

This chart illustrates the fact that for many years, every graduate of the LMU MLS Program who sought gainful employment post-graduation in the medical laboratory science field was successful.

