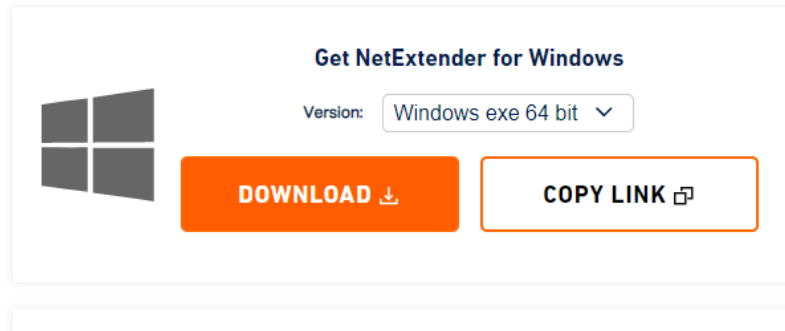
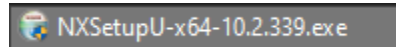


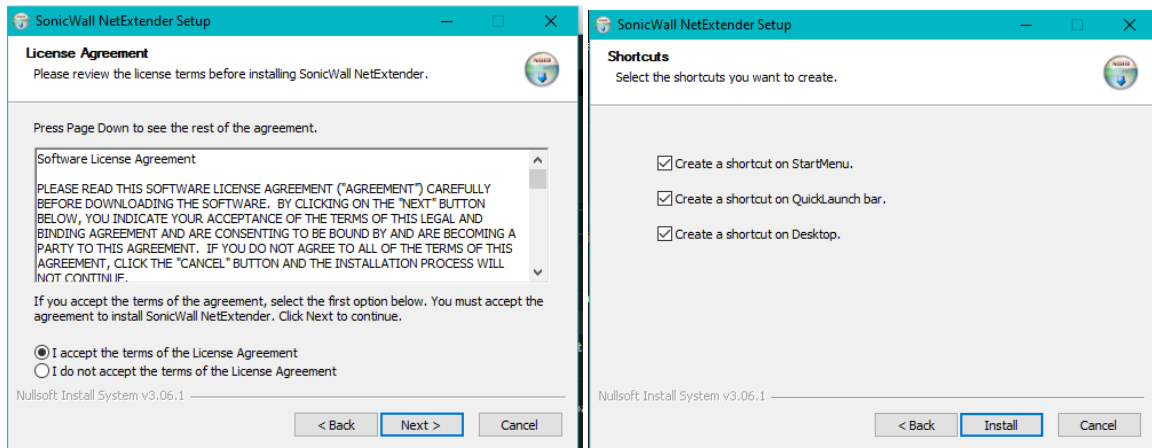
1. Download the SonicWall NetExtender Client for your machine [here](#).
2. Click the dropdown menu that reads “Get NetExtender for Windows” and choose Windows exe 64 bit
3. Click the download button and let the .exe file download.



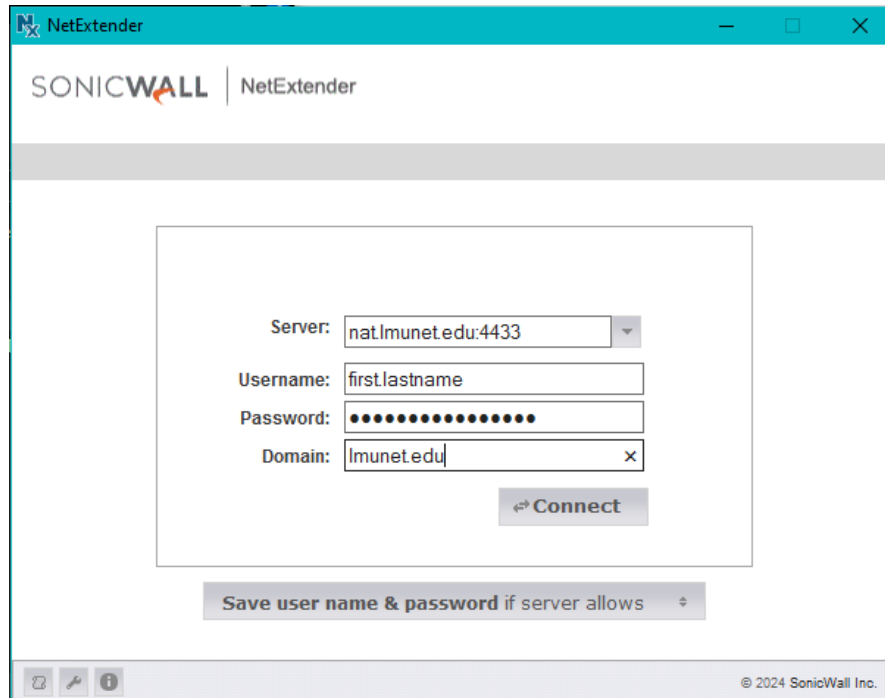
4. Find the NXSetupU-x64-10.x.xxx.exe file in your downloads folder and double-click on it.



5. Follow the installation prompts and accept the terms of the License Agreement. Leave the default selections and click Next. Choose the shortcuts you want to create and click Install.



6. After the installation is complete, run the NetExtender application. You will be prompted for server information and your username and password. For the Server, type in nat.lmunet.edu:4433 (nat2.lmunet.edu:4433 will be used if an outage with primary connection occurs.) The username will be your first.lastname. The password will be the same as the one used to log into MyLMU. For the domain, enter lmunet.edu.



7. Once the information is entered, hit the connect button. Two-Factor authentication will prompt you to enter a code, or you will be called to verify your account. After this, you will be connected to the VPN client.

