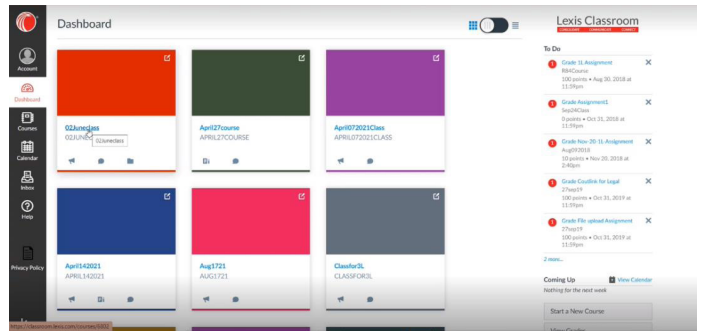
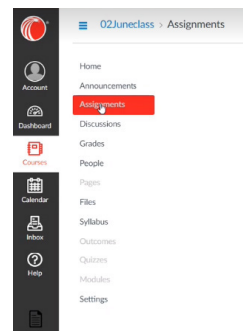


Lexis® Learn: Canvas Tool Assignment Steps

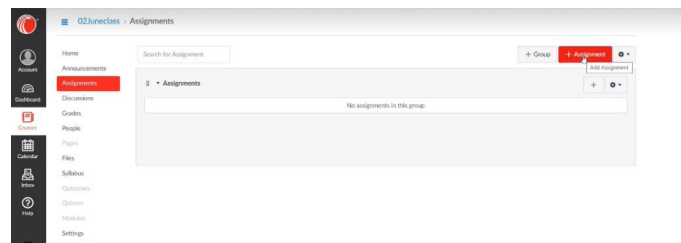
- 1 Log in to Canvas through Lexis Classroom
- 2 Once you are on the home page, select the course you would like to assign the Lexis Learn module



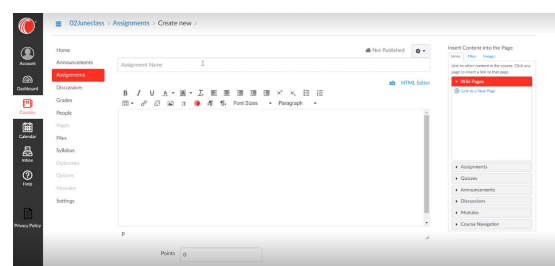
- 3 Select Assignments:



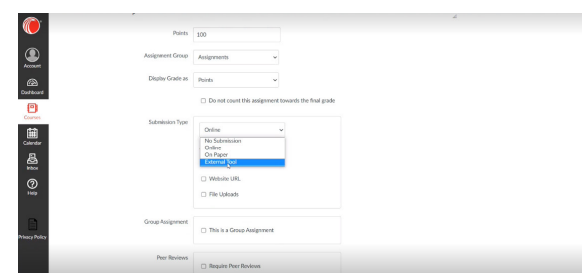
- 4 Select "+ Assignment"



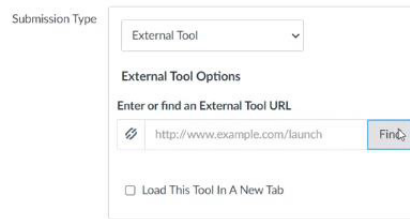
- 5 Enter the assignment name, description, and point value that you would like as usual:



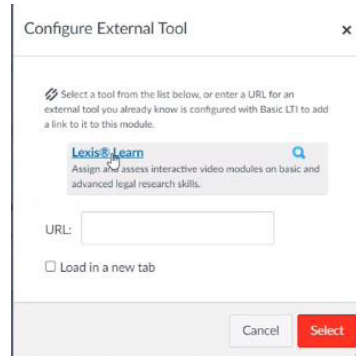
- 6 Scroll down, and under "submission type" select "External Tool":



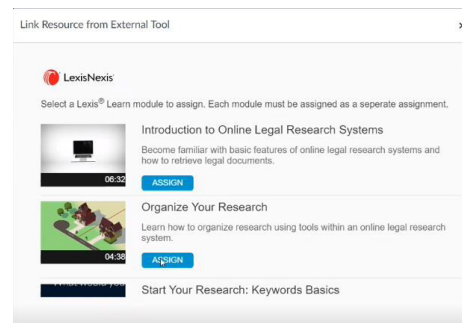
7 Select “Find”



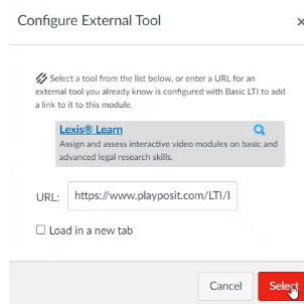
8 This popup window will appear, and this is where “Lexis Learn” should now appear and be able to be selected:



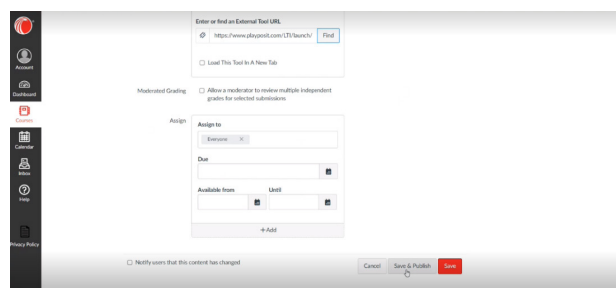
9 After selecting the Lexis Learn tool, you should be able to now select which module you would like using the “assign” button link (note: you can only select one module per assignment).



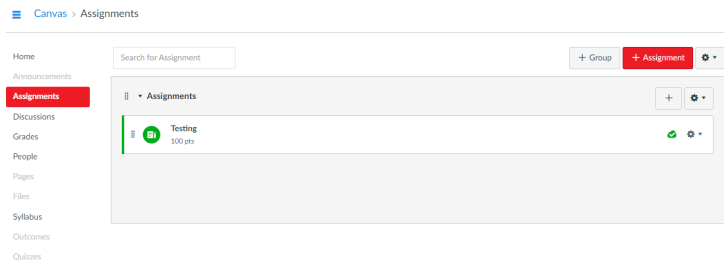
10 Once you have clicked “assign,” now you will click “select”:



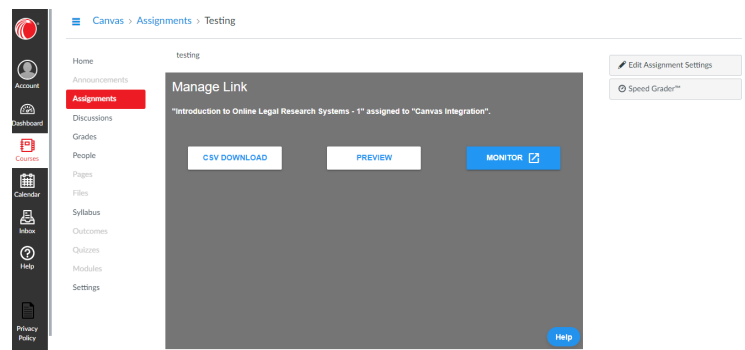
11 Now, you can choose to Save & Publish or Save the assignment as usual:



12 To access the module student analytics, click the link to the assignment you'd like to see in the "Assignments" tab:



13 Then, you will have the option to have a CSV download of the student analytics, preview the module itself, or "monitor" to see current analytics without having to download the CSV file:



14 Here is an example of what the "monitor" tab shows (this is also the information able to be exported in the CSV download):

