

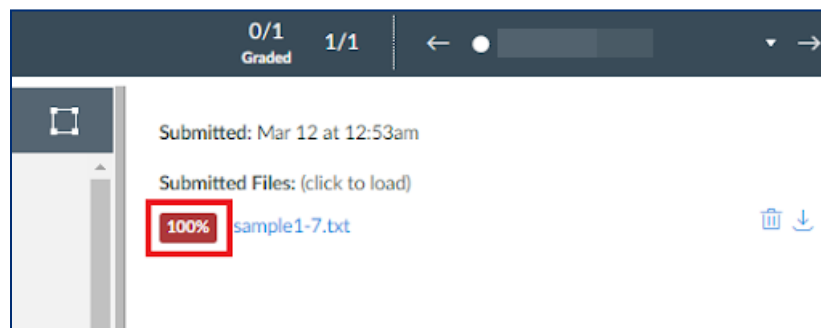
## How to Use the CopyLeaks Artificial Intelligence (AI) Detection Tool in Canvas

### Key Items to Remember

- **There is no AI detection percentage visible within SpeedGrader.** To see students' AI detection percentage, graders **MUST** select the Similarity Score percentage referenced below.
- Because the Similarity Score and the AI detection percentage do not impact one another, **students may have a Similarity Score of 0% but still have AI detected in their submissions.**
- **Thus, it is important to select all Similarity Scores in SpeedGrader to open the Similarity Report in CopyLeaks and check for AI detection.**

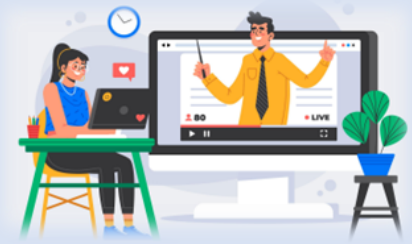
### Similarity Score/Matched Text Percentage/Plagiarism Score

When grading student submissions in SpeedGrader with the CopyLeaks integration enabled, the grader can view the student's similarity score directly within SpeedGrader. The score is featured as a colored percentage adjacent to the student's submission file.



\*\*\*To **fully** view the student's Similarity Report, the grader must click on the Similarity Score in SpeedGrader. This will open the Similarity Report in CopyLeaks.

To learn more about interpreting the Similarity Report, review [Copyleaks Overview - Similarity Report](#).



## AI Detection

**The Matched Text Percentage and the AI Content Percentage are independent and do NOT influence one another.**

1. **Matched Text:** indicates the percentage of matching text, including plagiarism, paraphrasing, etc., found within a scanned document when compared against the Copyleaks internal database, trillions of webpages, open-source journals, and more.
2. **AI Content:** indicates a percentage of the overall potential AI content detected within the scanned text.

**Matched Text** 44.2% **AI Content** 43.4%

**Submitted text** (724 words)

and responsibilities of the executive branch, providing a framework that has guided subsequent administrations. Washington's leadership during the formative years of the United States helped stabilize the nation and solidify its standing in the world. Furthermore, Washington's decision to voluntarily step down from the presidency after two terms set an important precedent for peaceful transitions of power. This act demonstrated his commitment to the principle of a limited presidency and avoided the entrenchment of power that could have jeopardized the young democracy. This tradition of peaceful transfers of power continues to be a hallmark of American democracy. Another lasting impact of Washington's legacy is his role as the commander-in-chief of the Continental Army during the American Revolution. His strategic leadership, resilience, and determination were instrumental in securing victory against the British, securing the independence of the United States. Washington's military prowess and character continue to inspire generations of leaders and military personnel. Washington's contributions extend beyond his political and military achievements. As a Founding Father, he played a crucial role in the drafting and ratification of the United States Constitution. His wisdom and insights helped shape the document that serves as the bedrock of American governance to this day. Additionally, Washington's reputation for integrity and moral character has had a lasting impact on the expectations placed on public officials. His commitment to ethical leadership and civic virtue set a standard for future leaders to aspire to and influenced the notion of a leader's personal character being of paramount importance.

**Matching Text Results (9)**

- Biography of George Washington (Text Only)  
Internet Result  
<https://georgewbush-whitehouse.archives...>  
President | Vice President | First Lady | Mrs. Cheney | News & Policies History & Tours |...  
42.4%
- George Washington  
Internet Result  
<https://clintonwhitehouse3.archives.gov/W...>  
This is historical material, "frozen in time." The web site is no longer updated and links to external web sites and some in...  
41.7%